

# EDGERTON MEADOWS

A REACH Advocacy Community





*Promoting Housing as a Human Right*

## **Mission Statement**

REACH Advocacy is breaking the cycle of chronic homelessness by providing graduated and permanent housing options with equitable access to resources. We advocate for housing as a human right, promoting dignity, a sense of belonging, and hope for a beloved community.

# Project Summary

Edgerton Meadows, a project of REACH Advocacy, is an innovative and collaborative solution to the lack of affordable housing for people experiencing homelessness with incomes at or below 30% of the Area Median Income (our target population). The project includes constructing twelve tiny homes on slab foundations, meeting all City codes providing safe and stable permanent supportive housing, along with a Resident Manager's unit, a community room, off-street parking, bike lockers, and a community garden.

# Location

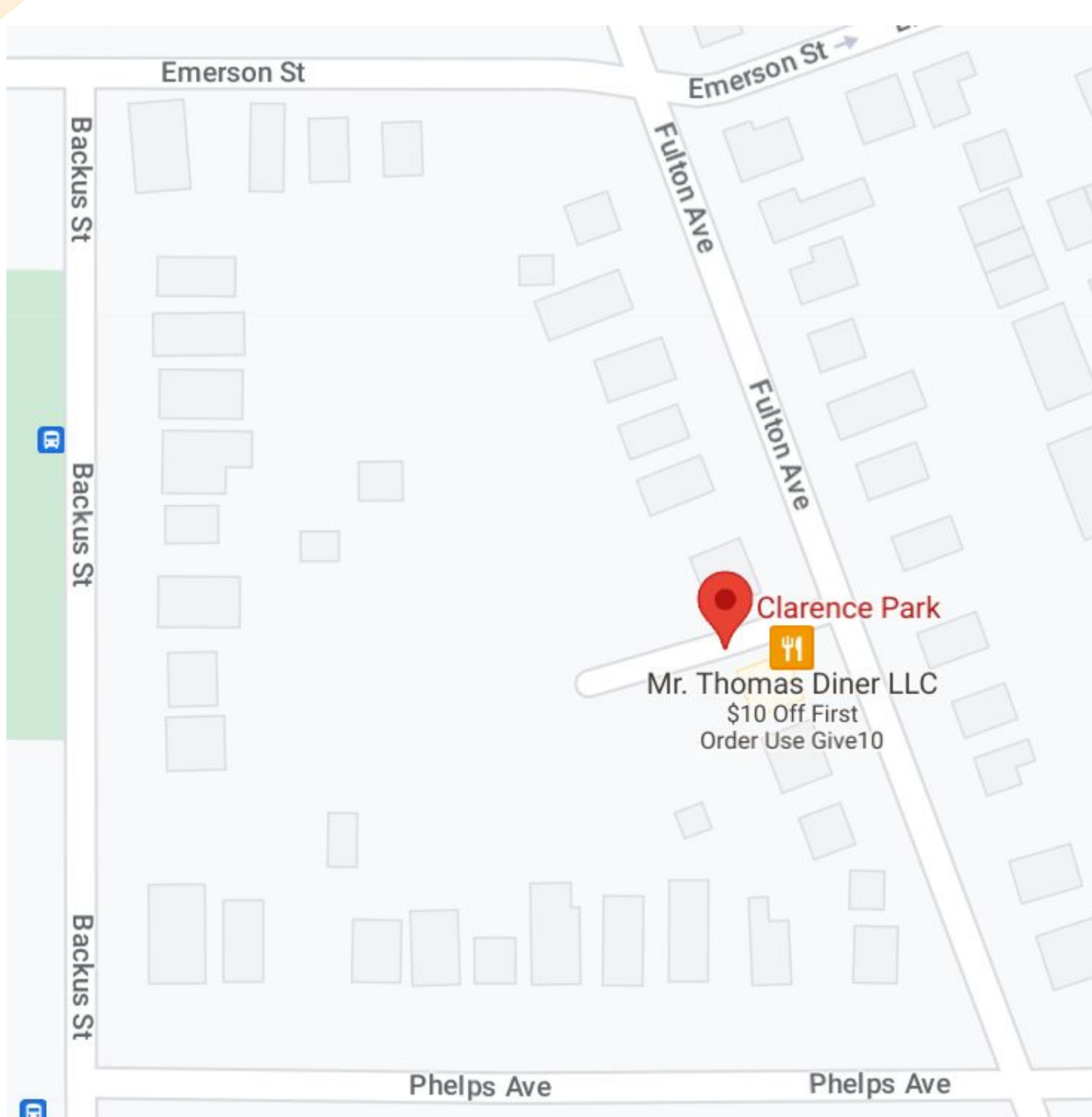
2-12 Clarence Park, 14608

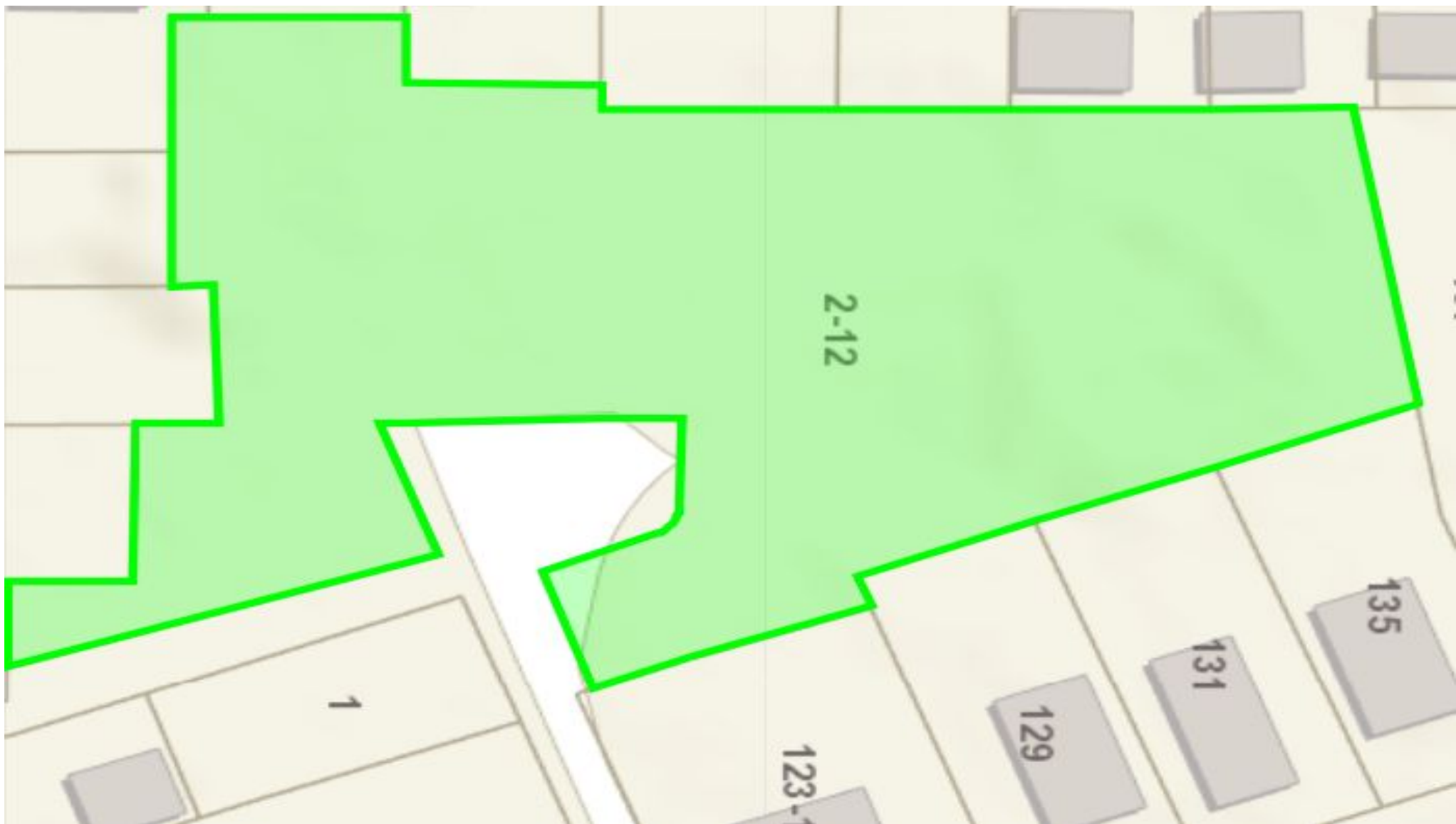
.89 Acre, vacant

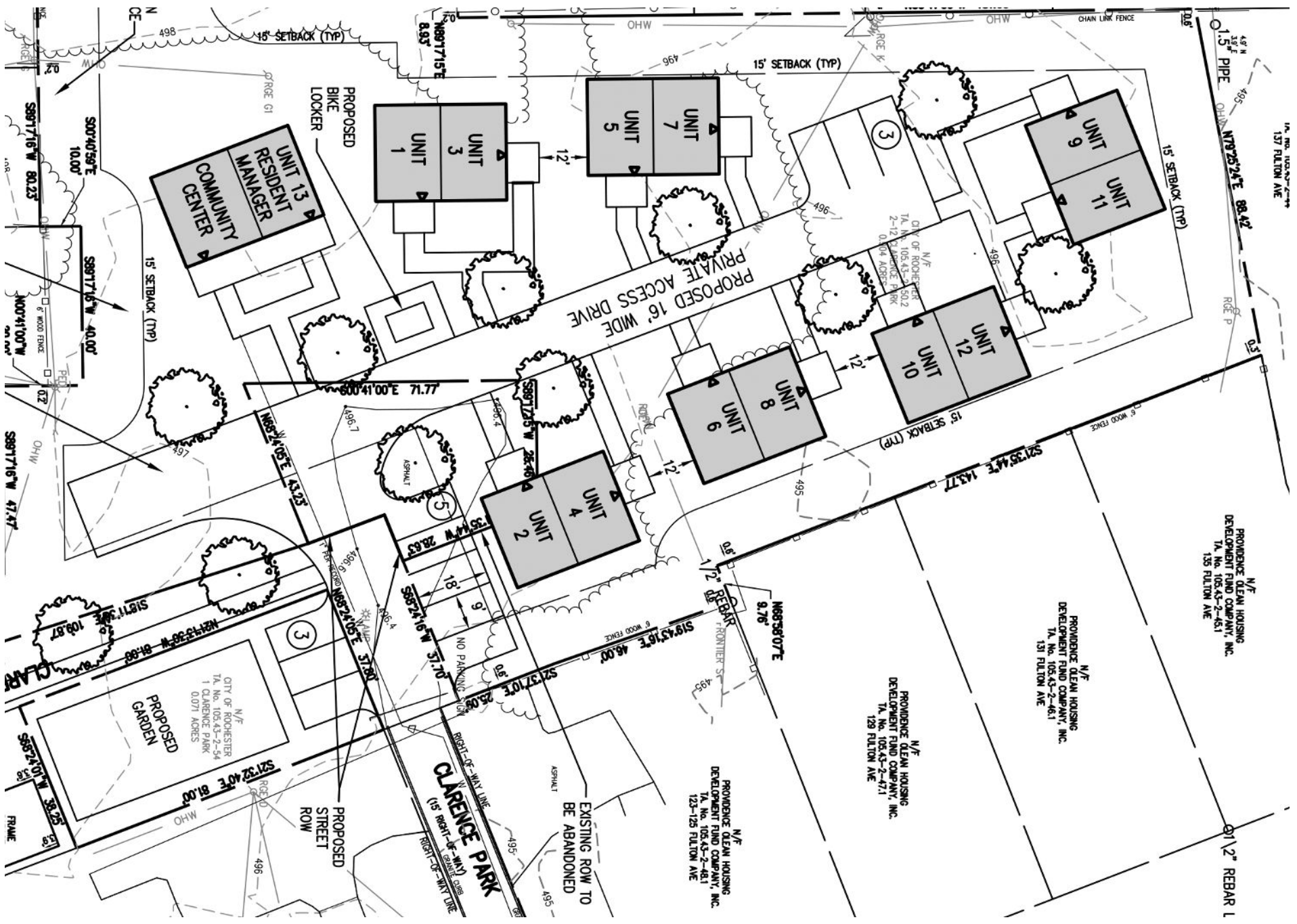
1 Clarence Park

Proposed community garden









# Community Engagement

- Project updates at Edgerton Area Neighborhood Association meetings
- NW Neighborhood Service Center, Kelvin Knight
- Jose Peo, NW City Councilmember
- Flyer 300' mail campaign
- Property cleanup with local volunteer assistance
- Jones Park neighborhood picnic information booth
- Flyer 600' door to door campaign per CM Michael Patterson's request





# Letters of Support

- Edgerton Neighborhood Association
- Providence Housing
- PCHO
- Rochester Refugee Resettlement
- NW Rotary Club
- Catholic Family Service
- Urban League
- Senator Jeremy Cooney
- Area Churches

# Supporters

- City of Rochester, Mayor
- City of Rochester, NBD
- NW Neighborhood NSC
- City Council members Peo, Gruber, Patterson, Lupien, and Smith
- MC Legislator Ricky Frazier
- State Senator Jeremy Cooney
- Assemblymember Harry Bronson



Illustration Only  
Not To Scale

# Tiny Home Village REACH Advocacy

**GLA**  
Greater Living Architecture, P.C.

# What makes us different?

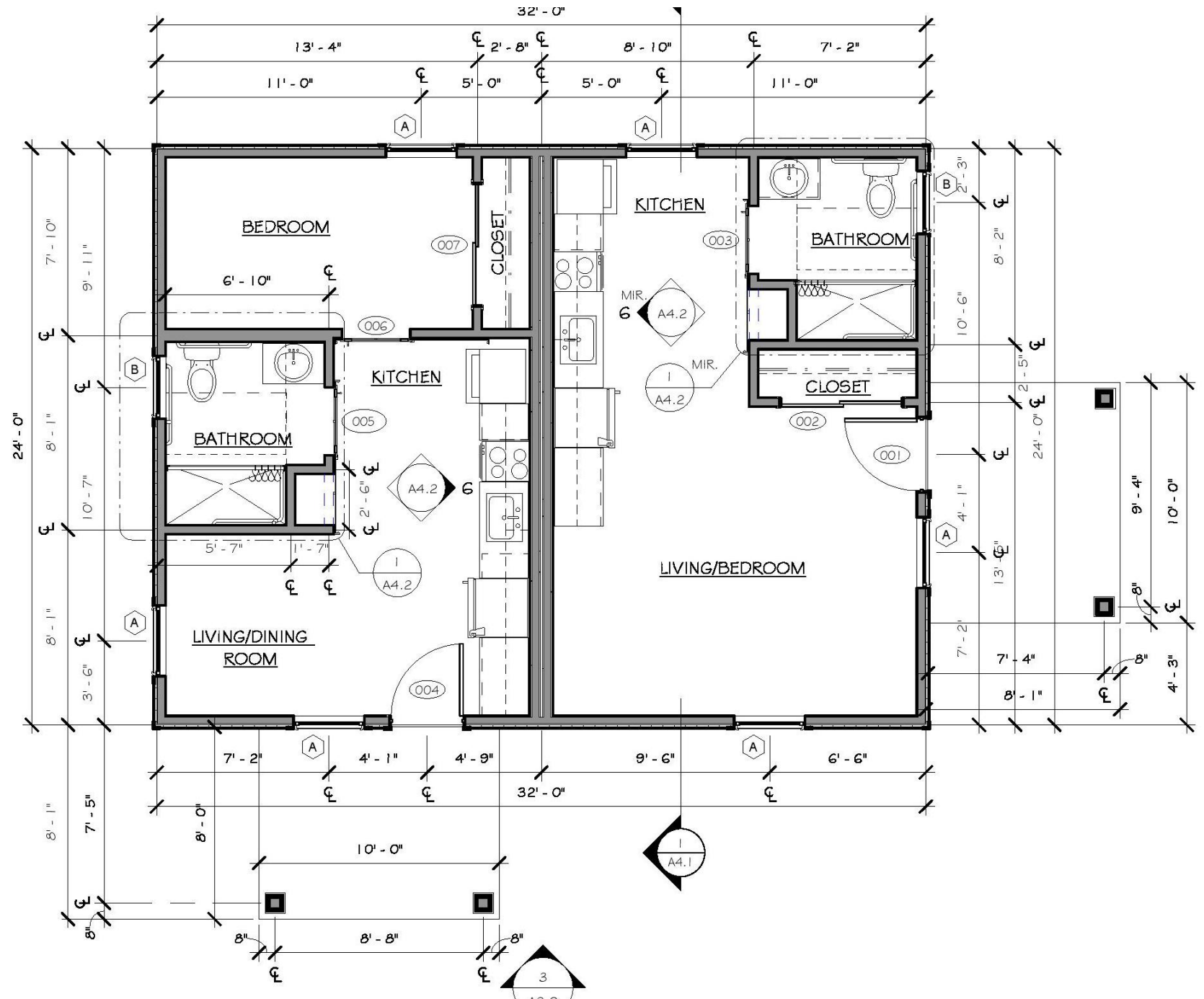
- Permanent supportive housing
- Walking distance to wrap services
- On-site resident manager (peer support)
- Trauma-informed design
- Listening sessions
- Building in the City, not in an abandoned parking lot or rural area
- Code-compliant
- Completely ADA-accessible
- All amenities of a home
- Near a major transit corridor
- Two blocks to a grocery store

# Residential Units

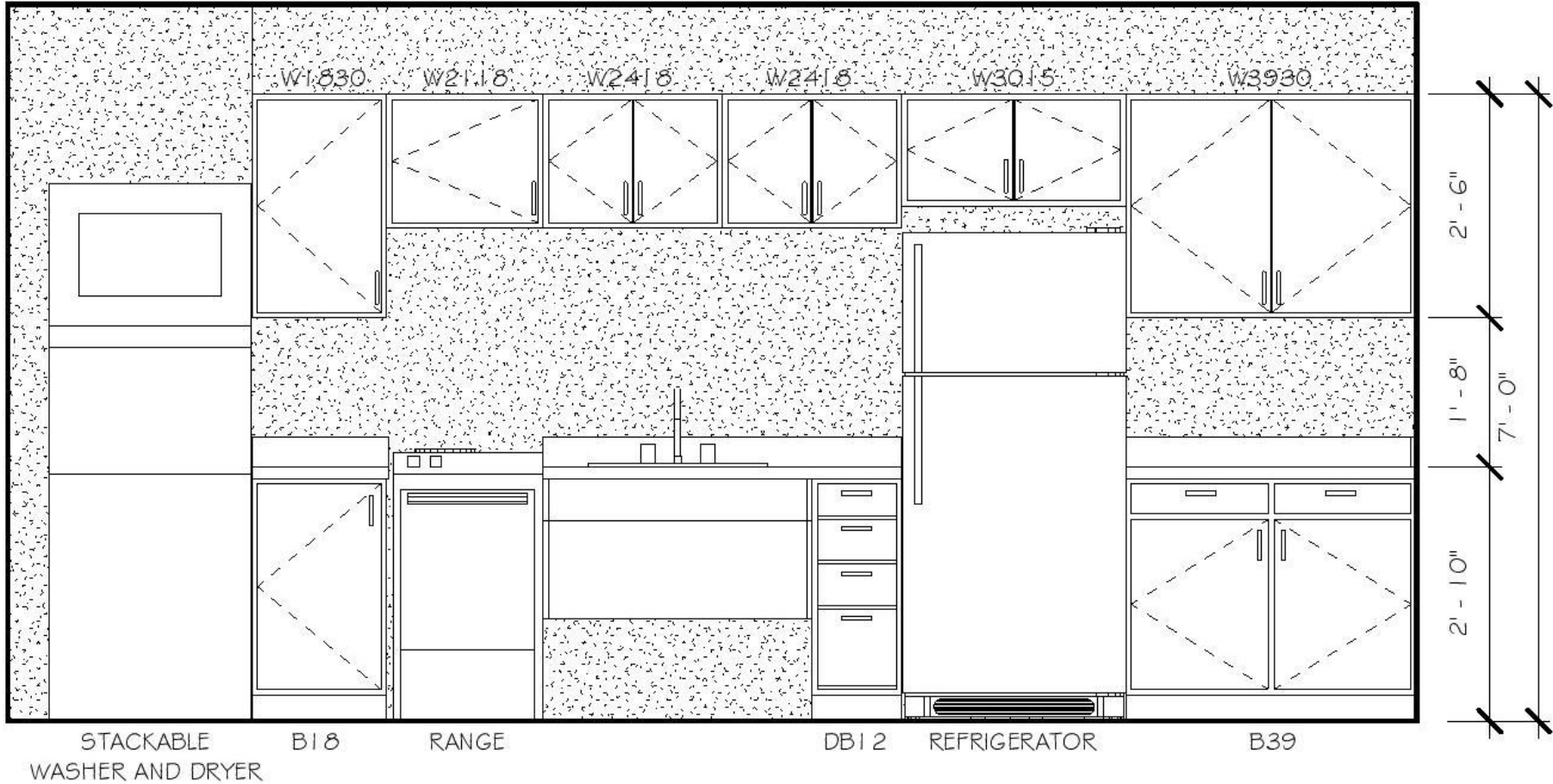
- 12 Units, six each studio and one bedroom
- Code-compliant and ADA-accessible
- Include kitchen, bath, living/sleeping space, and private front porch
- Laundry in unit
- All electric including heating and air conditioning
- Soundproofing between units
- Off-street parking and bike lockers
- Internet, electric and water included



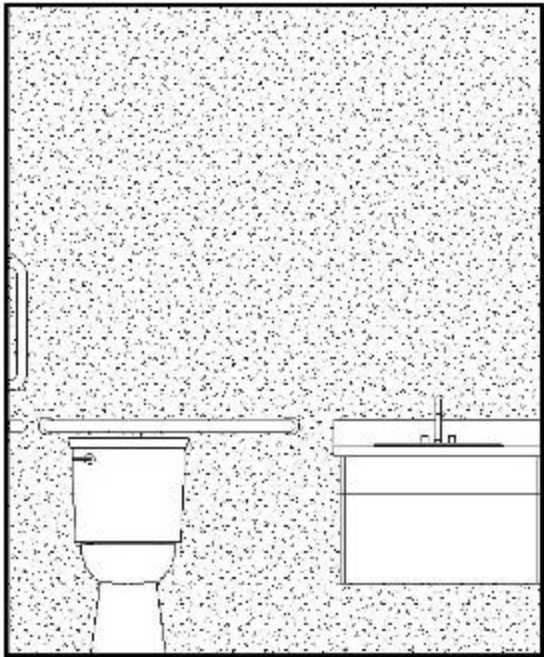
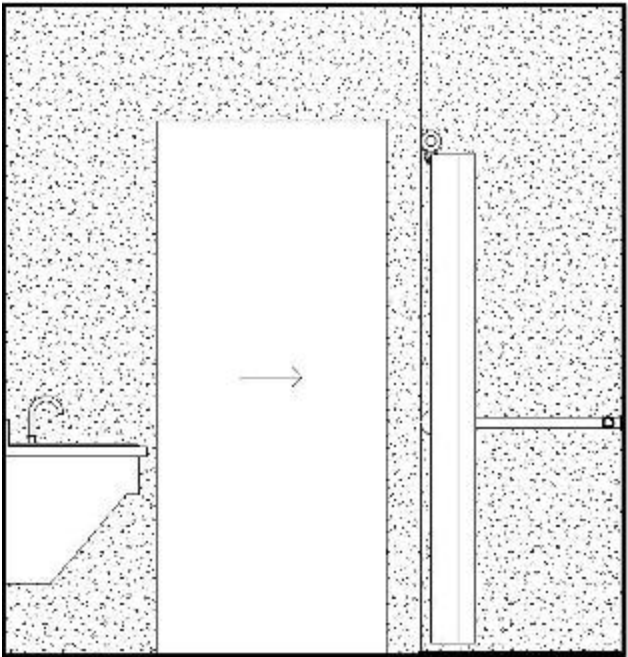
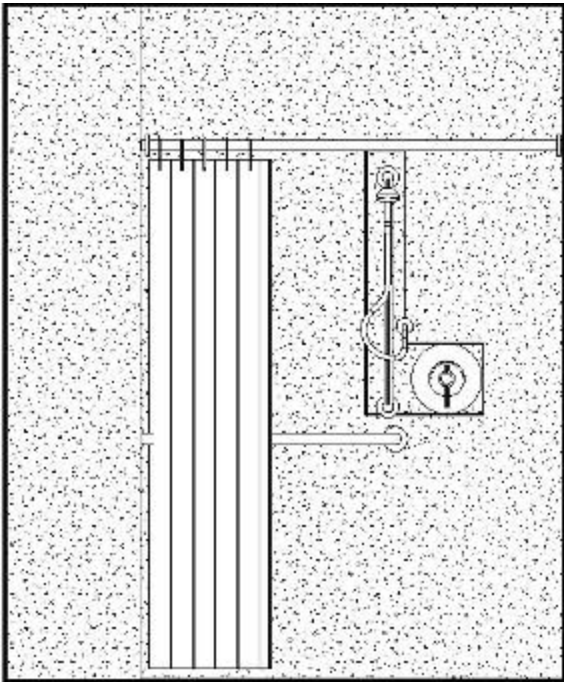
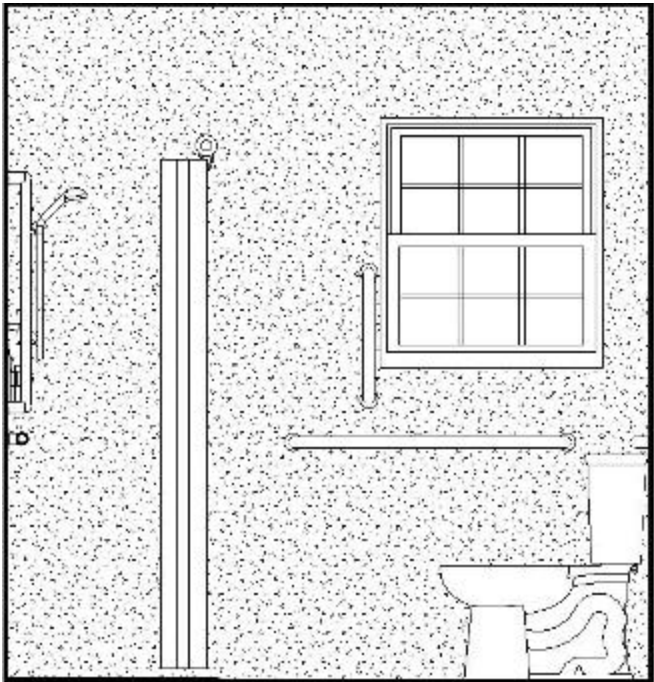
# Resident Units



# Kitchen

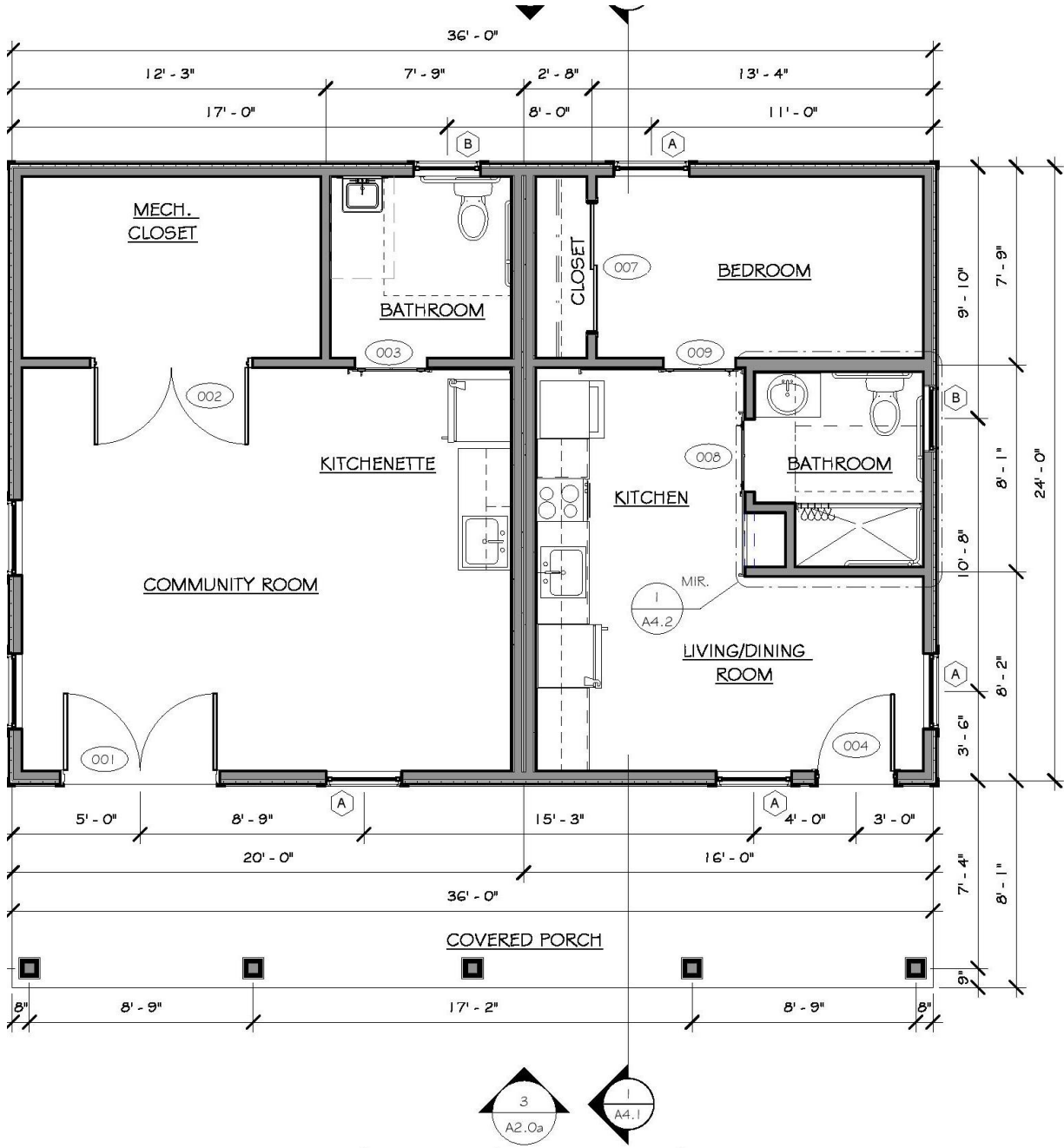


# Bathroom





# Community Room/ Resident Manager



2 FIRST FLOOR PLAN - COMMUNITY BUILDING  
1/4" = 1'-0"

# Workforce Development

Livingston Associates will coordinate the Workforce Development effort and sponsor a Job Fair in the Edgerton Neighborhood. Partners include:

- CFC YouthBuild
- Urban League YouthBuild
- Edison Tech
- Heritage Christian Services
- ITEC
- US Ceiling
- NextGen Building Components
- MIG
- ROBEX
- Others TBD

# Project Operations

## Resident screening process

- REACH/Tiny Home Team Lead
- Resident Manager
- Coordinated with neighborhood

## Case Management with MC Collaborative

- Andy Carey, REACH Board Vice Chair
- In discussions with local agency for potential ESSHI collaboration



# Questions?

Contact Us:

Marcia Reaver, Project Lead

<https://reachadvocacy.org>

[tinyhomes@reachadvocacy.org](mailto:tinyhomes@reachadvocacy.org)

(585) 364-1709

# Your Support is Needed

- ESSHI Letter of Support
- Presentation at our Team Meeting



**Thank You!**